

# Central States Casters



[www.csccaster.com](http://www.csccaster.com)

Serving the  
Dairy and Food Processing Industry

Keeping You Rolling Since 1995



## LMSS SERIES

Light/Medium Duty Stainless Steel



Capacity up to 350 lbs.  
Lubricated double ball bearing raceways  
Complete 304 stainless steel construction  
3/8" diameter axle with lock nut

### Applications include:

- Light/medium duty material handling equipment with wash down & caustic applications
- Institutional equipment
- Medical equipment
- Food service equipment
- Pharmaceutical equipment

## MDSS SERIES

Medium Duty Stainless Steel



Capacity up to 1,100 lbs.  
Lubricated double ball bearing raceways  
Complete 304 stainless steel construction  
1/2" diameter zerk axle with lock nut

### Applications include:

- Medium duty material handling equipment with wash down & caustic applications
- Medical equipment
- Food service equipment
- Pharmaceutical industry

## Goff's Strip Doors

Let People & Industrial Equipment Through,  
While Blocking Dirt, Dust, Noise &  
Temperature with Goff's Strip Doors!

### Applications include:

- Temperature Control
- Interior & Exterior Doors
- Room Division
- Loading Docks
- Noise Control
- Welding Booths



# Prevenz™ Antimicrobial Wheels



## The Prevenz Story

### How Does Prevenz™ Work?

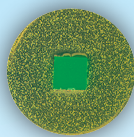
The antimicrobial compound used in Prevenz™ wheels is designed to suppress the growth of a variety of destructive and odor causing microbes including bacteria, molds, mildew, and fungi. The active ingredients neutralize the ability of microbes to function, grow and reproduce.

### How long does the protection last?

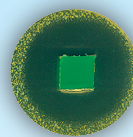
Prevenz™ is engineered to be effective against microbes for the life of the wheel. The agent remains stored in the polymer and is gradually released to the surface of the wheel.

### Will scratches, tread wear or wax buildup diminish the effectiveness?

No. Prevenz™ protection is not a coating on the surface of the wheel. It is an integral part of the wheel material. Abrasion, chips or scratches will not impact the effectiveness of Prevenz™ in any way. Not even wax buildup on the wheel can impair the bacteria fighting performance.



Without Prevenz™



With Prevenz™

### Does Prevenz™ eliminate the need for cleaning?

No. Although Prevenz™ provides an added level of protection, these wheels do not eliminate the need for normal cleaning practices. They are designed to work in conjunction with and enhance your ongoing program. Good hygiene practices should always be observed.

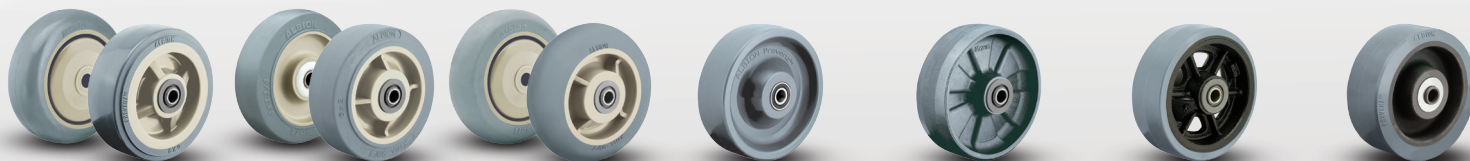
### Is Prevenz™ safe?

Yes. The active ingredients in Prevenz™ have undergone extensive laboratory testing and have been proven safe. The active ingredient has a history of hospital use for more than 25 years and is used in a broad range of popular personal care products, such as antimicrobial soap, toothpaste and deodorant. It is registered with the US Environmental Protection Agency (EPA), and products with this material have been approved by the US Food & Drug Administration (FDA), the European Union (EU), the National Sanitation Foundation (NSF) and other regulatory authorities around the world.



The EPA registered and FDA compliant antimicrobial additive used in Prevenz™ wheels is designed to suppress the growth of a variety of destructive and odor causing microbes including bacteria, molds, mildew and fungi. These wheels are suitable for a variety of applications including medical equipment, food equipment, pharmaceutical, chemical, meat & poultry, processing plants and more. To order add "PREV" to end of model number.

## Albion Prevenz™ - Wheel Availability



<b>XA Prevenz</b> Polyurethane on Polypropylene	<b>XS Prevenz</b> X-tra Soft Rubber Crowned Tread	<b>XR Prevenz</b> X-tra Soft Rubber Round Tread	<b>XP Prevenz</b> X-treme® Plus Solid Elastomer	<b>NG Prevenz</b> Maxim® Glass-Filled Nylon	<b>PY Prevenz</b> Polyurethane on Iron	<b>PX Prevenz</b> Thick Tread Polyurethane on Iron
--	---	--	--	--	--	---



## Food Processing Clean Curtains

### Sanitation Through Separation

- ✓ Reduce Process Line Downtime
- ✓ Improve Plant Sanitation
- ✓ Prevent Cross Contamination Between Processing Lines
- ✓ Turn Sanitation Hours into Production Hours